

AgraQuant® Allergen ELISA Test Kit

AgraQuant® Allergen Test Kits, sandwich enzyme linked immunosorbent assays (ELISA), have been developed to determine the level of specific food allergens in different commodities. AgraQuant® Allergen ELISA Test Kits are designed to analyze raw materials as well as processed foods.



Each kit comes complete with standards, antibody-coated microwells, extraction buffer, wash buffer, conjugate, substrate and stop solution.

AgraQuant® Allergen Kit Performance

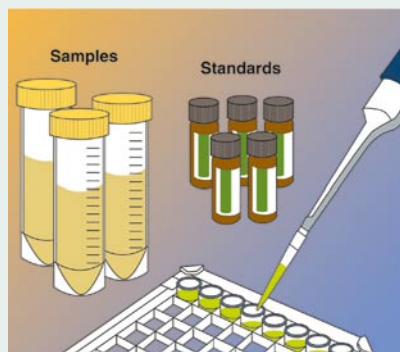
| | Item No. | Quantitation Range | Limit of Detection |
|-------------------------------|-----------|--------------------|--------------------|
| AgraQuant®Peanut | COKAL0148 | 1-40 ppm | 0.1 ppm |
| AgraQuant®Gluten | COKAL0248 | 4-120 ppm | 0.6 ppm |
| AgraQuant®Hazelnut | COKAL0348 | 1-40 ppm | 0.3 ppm |
| AgraQuant®Soy | COKAL0448 | 40-1000 ppb | 16 ppb |
| AgraQuant® Almond | COKAL0748 | 0.4-10 ppm | 0.2 ppm |
| AgraQuant® Egg white | COKAL0848 | 0.4-10 ppm | 0.05 ppm |
| AgraQuant® Walnut | COKAL0948 | 2-60 ppm | 0.35 ppm |
| AgraQuant® Beta-Lactoglobulin | COKAL1048 | 10-400 ppb | 1.5 ppb |

Benefits

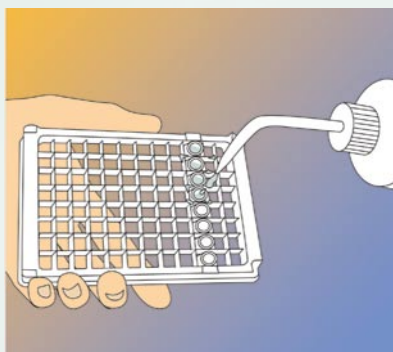
- Highly sensitive – low detection limits
- Rapid – 60 minutes total incubation time
- Stable – 12 months shelf life
- User friendly - ready to use reagents and simple handling procedure, common for all AgraQuant® Allergen Test Kits
- Cost-effective – 48 breakaway microwell format; minimizes waste and maximizes value

Procedure for AgraQuant® Allergen Test Kit

IMPORTANT: Please read kit insert before running the test.



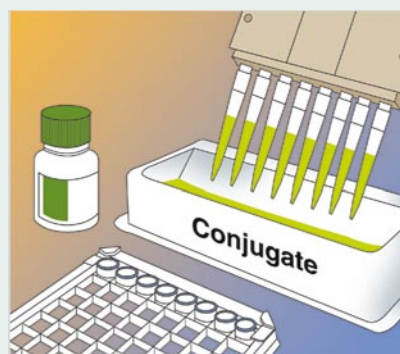
1) Add 100 µL standard or sample to antibody coated well and incubate for 20 minutes.



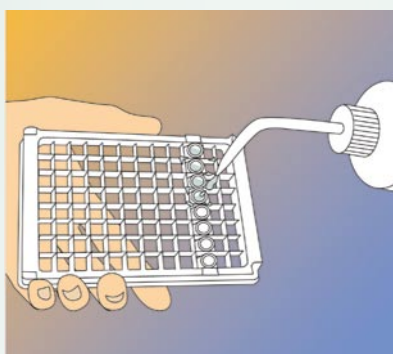
2) Discard contents from the wells and wash three times with wash buffer.



3) Tap to dry plate.



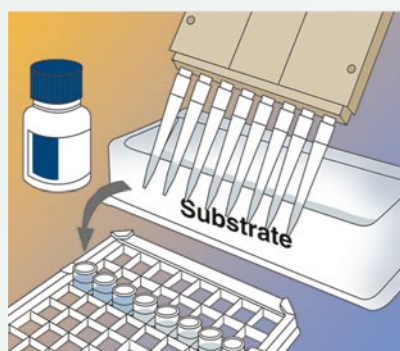
4) Add 100 µL of conjugate into well and incubate for 20 minutes.



5) Discard contents from the wells and wash three times with wash buffer.



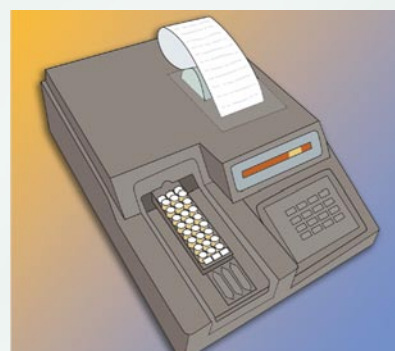
6) Tap to dry plate.



7) Add 100 µL substrate to each well and incubate for 20 minutes in the dark.



8) Add 100 µL stop solution to each well.



9) Read wells with a microwell reader using a 450 nm filter and interpret results.

For further information, please contact:

• office@romerlabs.com • salesasia@romerlabs.com • office-europe@romerlabs.com

